



BRICK
C O L L E C T I O N



RIJSWAARD®
BAKSTEEN

STERREWAARD®
BAKSTEEN

C O N T E N T

02 / 07	MATRIX / PRODUCTRANGE
08 / 17	MACHINE MOULDED COLLECTION
18 / 29	HAND MOULDED COLLECTION
30 / 39	STERREWAARD COLLECTION
40 / 47	AQUA / KAMELEON COLLECTION
48 / 53	RETRO COLLECTION
54 / 61	FLAME COLLECTION
62 / 65	BRICKSLIPS
66 / 69	BLENDS
70	TEXTURE DESIGNER
71	DE RIJSWAARD BRICKWORKS
72 / 73	SUSTAINABILITY
74	STERREWAARD SHOWROOM
75	RIJSWAARD SHOWROOM





MATRIX

I N F O

MATRIX BRICKS AND SIZES

	210x100x50 VB WF	210x100x50 HV WF	210x100x55 RENO VB	215x100x65 VB EF	215x100x65 HV EF	210x100x50 WS WF	215x100x65 WS EF
MACHINE MOULDED COLLECTION							
Antraciet VB WF	•						
Brons VB WF	•						
Geel zz VB WF	•						
Maasbruin VB WF	•						
Naturel VB WF	•						
Paars Rustiek VB WF	•						
Roodpaars VB WF	•						
Zwart mangaan VB WF	on demand						
Maasbruin Reno VB			•				
Roodpaars Reno VB			•				
Aalster Bont VB EF / DR36B				•			
Antraciet VB EF / DR46B				•			
Beige VB EF / DR52B				•			
Engels Bont VB EF / DR2B				•			
Engels Bont Redux VB EF / DR12B				•			
Geel zz VB EF / DR4B				•			
Grijs zz VB EF / DR40B				•			
Naturel VB EF / DR20B				•			
Regent VB EF / DR6B				•			
Staplefield VB EF / DR22B				•			
HAND MOULDED COLLECTION							
Aalster Bont HV WF		•					
Antraciet HV WF		•					
Aubergine HV WF		•					
Bommels Bont HV WF		•					
Bommels Bont Redux HV WF		•					
Brons HV WF		•					
Engels Bont HV WF		•					
Gamers Bont HV WF		•					
Geel zz HV WF		•					
Grijs zz HV WF		•					
Maasbruin HV WF		•					
Mississippi HV WF		•					
Naturel HV WF		•					
Oranje WF HV		•					
Paars Rustiek HV WF		•					
Roodpaars HV WF		•					
Zwart mangaan HV WF		•					



MATRIX BRICKS AND SIZES

	210x100x50 VB WF	210x100x50 HV WF	210x100x55 RENO VB	215x100x65 VB EF	215x100x65 HV EF	210x100x50 WS WF	215x100x65 WS EF
HAND MOULDED COLLECTION							
Aalster Bont HV EF / DR37B					•		
Antraciet HV EF / DR39B					•		
Beige HV EF / DR57B					•		
Belgrave HV EF / DR5B					•		
Burngrave Redux HV EF / DR55B					•		
Engels Bont HV EF / DR1B					•		
Engels Bont Redux HV EF / DR51B					•		
Farnley HV EF / DR13B					•		
Geel grafiet HV EF / DR61B					•		
Geel zz HV EF / DR3B					•		
Geel zz Redux HV EF / DR53B					•		
Grijs zz HV EF / DR41B					•		
Holmbury HV EF / DR21B					•		
Naturel HV EF / DR11B					•		
Old West Mill HV EF / DR19B					•		
Rood zz HV EF / DR43B					•		
Whitley HV EF / DR15B					•		
AQUA COLLECTION							
Aqua beige redux WF						•	
Aqua geel WF						•	
Aqua grijs WF						•	
Aqua maasbruin redux WF						•	
Aqua roodpaars WF						on demand	
Aqua roodpaars redux WF						•	
Aqua Geel EF / DR24B							•
Aqua Roodpaars redux EF /DR14B							•
AQUA COLLECTION KAMELEON							
Aqua bruin geel WF						•	
Aqua geel wit WF						•	
Aqua geel bruin WF						•	
Aqua grijs wit WF						•	
Aqua grijs zwart WF						•	
Aqua oranje blauw WF						•	

MATRIX BRICKS AND SIZES

	210x100x50 VB WF	210x100x50 HV WF	210x100x55 RENO VB	215x100x65 VB EF	215x100x65 HV EF	210x100x50 WS WF	215x100x65 WS EF
STERREWAARD COLLECTION							
Auriga HV WF		•					
Carina HV WF		on demand					
Centaurus HV WF		•					
Grus HV WF		•					
Hydra HV WF		•					
Indus HV WFV		•					
Lepus HV WF		•					
Libra HV WF		•					
Mensa HV WF		on demand					
Norma HV WFV		•					
Sagitta HV WF		•					
Sculptor HV WF		•					
Virgo HV WF		•					
Auriga HV EF / DR203B					•		
Draco HV EF / DR201B					on demand		
Gemini HV EF / DR107B					•		
Indus HV EF / DR131B					•		
Lepus HV EF / DR129B					•		
Sagitta HV EF / DR105B					•		
RETRO COLLECTION							
Boise HV WF / RC205		•					
Boulder HV WF / RC207		•					
Cheyenne HV WF / RC209		•					
Jackson HV WF / RC219		•					
Chimay VB EF / RC144				•			
Dakota VB EF / RC128				•			
Texas VB EF / RC116				•			
Utah VB EF / RC118				•			
Wisconsin VB EF / RC122				•			
FLAME COLLECTION							
Caramel Brown Flame WS WF						•	
Crimson Red Flame HV WF		•					
Dark Amber Red Flame HV WF		•					
Fawn Yellow Flame HV WF		•					
Macaroon Yellow Flame HV WF		•					
Pewter Grey Flame HV WF		•					
Sable Black VB WF	•						
Salmon Red Flame VB WF	•						
Smoke Grey Flame WS WF						•	





Clay cellar

'De Rijswaard' is one of two brick factories in the Netherlands with a clay cellar. Here the pre-processed pieces of clay are stored **layer by layer**, with the purpose of **homogenizing** the raw material even further.

Finally, the clay is scraped up **diagonally with a dredging machine**.

From the clay shed, the clay is automatically transported to the brick press.

A large industrial brick-making machine is shown in a factory setting. The machine is primarily green and yellow, with various rollers and conveyor belts. A large, dark brown brick is being processed by the machine, with a significant amount of dust or fine material being blown away from the brick. The background shows the complex structure of the factory, including pipes and structural beams.

Stock bricks have a
smooth surface and are
sanded on five of the
six sides.



MACHINE MOULDED

C O L L E C T I O N

- Antraciet VB WF
- Brons VB WF
- Geel zz VB WF
- Maasbruin VB WF
- Naturel VB WF
- Paars Rustiek VB WF
- Roodpaars VB WF
- **Zwart mangaan VB WF** (on demand)
- Maasbruin Reno VB
- Roodpaars Reno VB
- Aalster Bont VB EF / DR36B
- Antraciet VB EF / DR46B
- Beige VB EF / DR52B
- Engels Bont VB EF / DR2B
- Engels Bont Redux VB EF / DR12B
- Geel zz VB EF / DR4B
- Grijs zz VB EF / DR40B
- Naturel VB EF / DR20B
- Regent VB EF / DR6B
- Staplefield VB EF / DR22B

MACHINE - MOULDED COLLECTION

With an even, smooth surface sanded on five of the six sides, machine-moulded bricks are by far our most popular bricks. They are produced by first pressing clay into moulds and then levelling off the surface. This results in a nice, smooth texture that is perfect for projects requiring a sleek aesthetic. This innovative production process makes machine-moulded bricks the first choice in a multitude of applications, and why machine-moulded bricks have made Rijswaard the success story it is today!

Machine-moulded bricks are also available in brick slips and corners.



Antraciet VB WF

RIJSWAARD MACHINE MOULDED



Antraciet VB WF



Brons VB WF



Geel z.z. VB WF



Maasbruin VB WF



Naturel VB WF



Paars Rustiek VB WF



Roodpaars VB WF



Zwart Mangaan z.z. VB WF (on demand)

RIJSWAARD MACHINE MOULDED



Maasbruin Reno VB



Roodpaars Reno VB



Aalster Bont VB EF / DR36B



Antraciet VB EF / DR46B



Beige VB EF / DR52B



Engels Bont VB EF / DR2B



Engels Bont Redux VB EF / DR12B



Geel z.z. VB EF / DR4B

RIJSWAARD MACHINE MOULDED



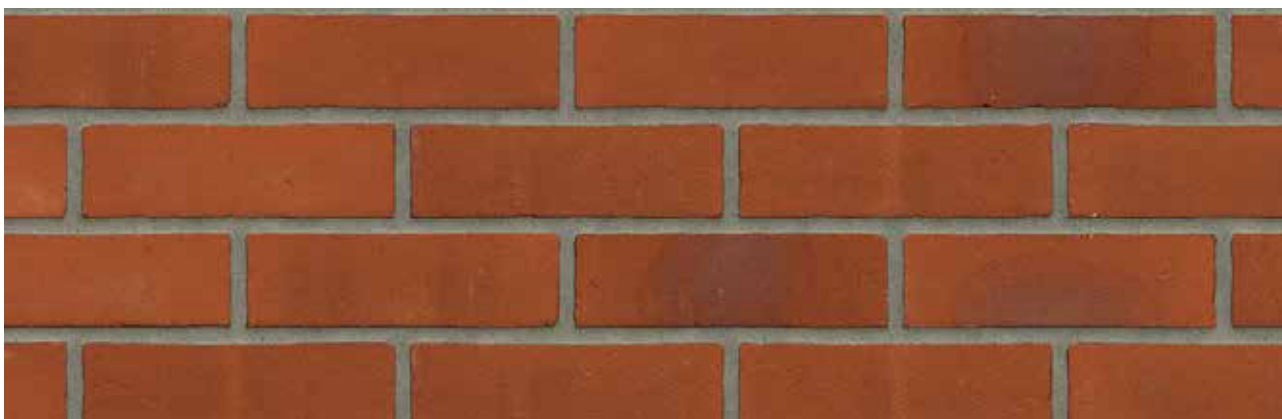
Grijs z.z. VB EF / DR40B



Naturel GB VB EF / DR20B



Regent VB EF / DR6B



Staplefield VB EF / DR22B



Antraciet VB WF / Aqua Grijs Wit WF

HAND - MOULDED COLLECTION

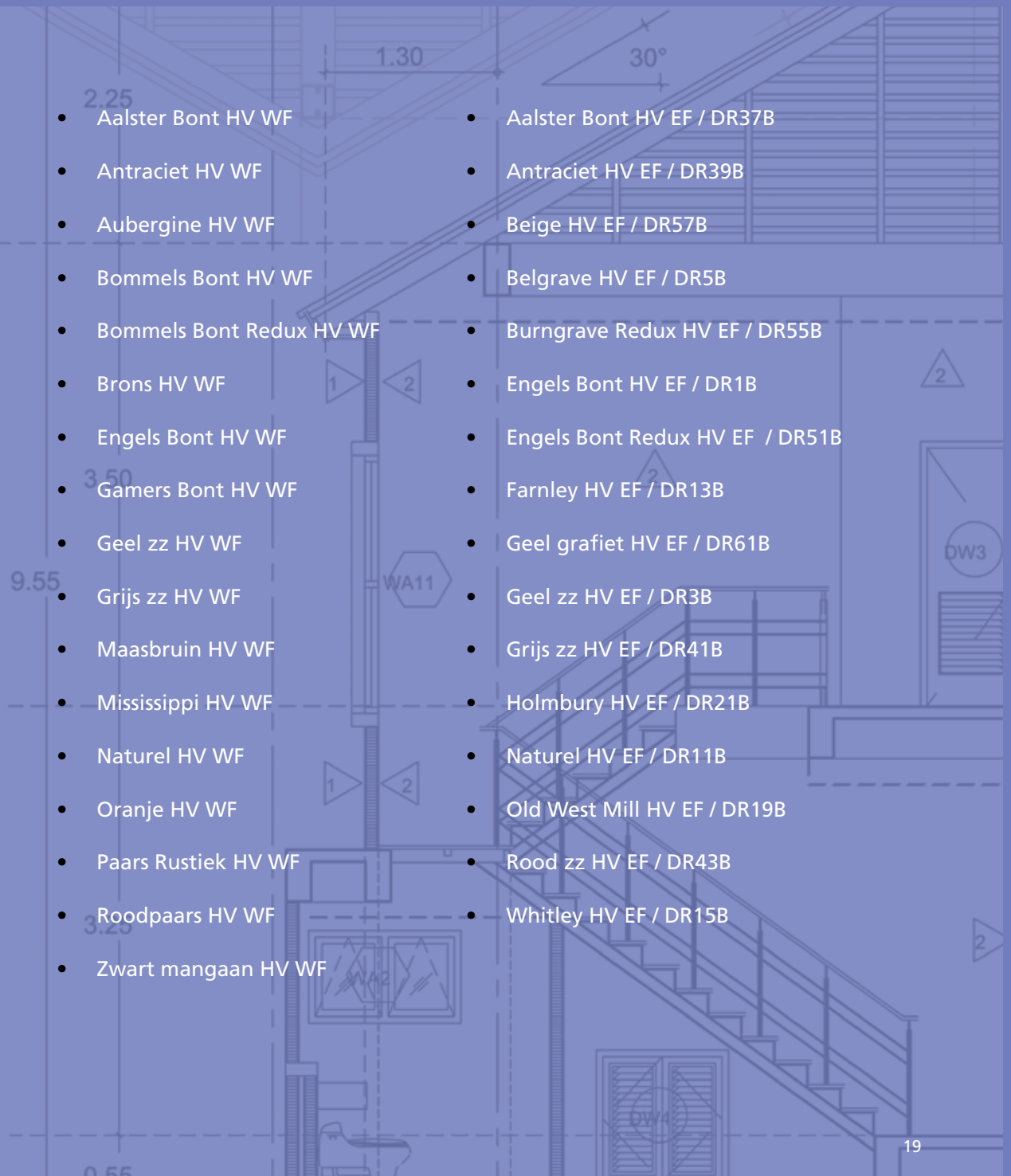
The name says it all: hand-moulded bricks are produced by first throwing the clay into a pre-sanded mould and then applying pressure to achieve the desired grain.

Hand-moulded bricks are also available in brick slips and corners.



HAND MOULDED

C O L L E C T I O N



- Aalster Bont HV WF
- Antraciet HV WF
- Aubergine HV WF
- Bommels Bont HV WF
- Bommels Bont Redux HV WF
- Brons HV WF
- Engels Bont HV WF
- Gamers Bont HV WF
- Geel zz HV WF
- Grijs zz HV WF
- Maasbruin HV WF
- Mississippi HV WF
- Naturel HV WF
- Oranje HV WF
- Paars Rustiek HV WF
- Roodpaars HV WF
- Zwart mangaan HV WF
- Aalster Bont HV EF / DR37B
- Antraciet HV EF / DR39B
- Beige HV EF / DR57B
- Belgrave HV EF / DR5B
- Burngrave Redux HV EF / DR55B
- Engels Bont HV EF / DR1B
- Engels Bont Redux HV EF / DR51B
- Farnley HV EF / DR13B
- Geel grafiet HV EF / DR61B
- Geel zz HV EF / DR3B
- Grijs zz HV EF / DR41B
- Holmbury HV EF / DR21B
- Naturel HV EF / DR11B
- Old West Mill HV EF / DR19B
- Rood zz HV EF / DR43B
- Whitley HV EF / DR15B

RIJSWAARD HAND MOULDED



Aalster Bont HV WF



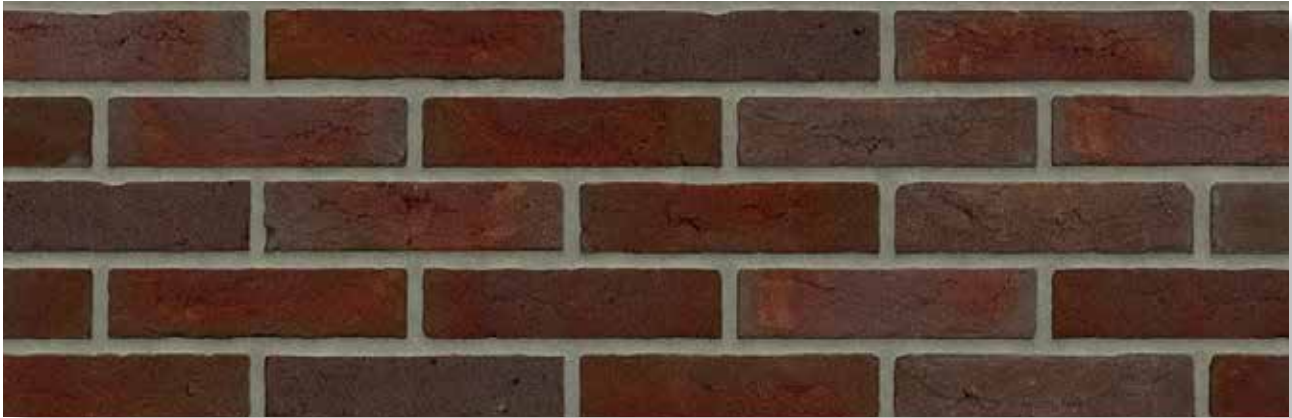
Antraciet HV WF



Aubergine HV WF



Bommels Bont HV WF



Bommels Bont Redux HV WF



Brons HV WF



Engels Bont HV WF



Gamers Bont HV WF

RIJSWAARD HAND MOULDED



Paars Rustiek HV WF



Geel z.z. HV WF



Grijs z.z. HV WF



Maasbruin HV WF



Mississippi HV WF



Naturel GB HV WF



Oranje HV WF



Roodpaars HV WF

RIJSWAARD HAND MOULDED



Zwart Mangaan z.z. HV WF



Aalster Bont HV EF / DR37B



Antraciet HV EF / DR39B



Beige HV EF / DR57B



Belgrave HV EF / DR5B



Burngrave Redux HV EF / DR55B



Engels Bont HV EF / DR1B



Engels Bont Redux HV EF / DR51B

RIJSWAARD HAND MOULDED



Farnley HV EF / DR13B



Geel Grafiet HV EF / DR61B



Geel z.z. HV EF / DR3B



Geel z.z. Redux HV EF / DR53B



Grijs z.z. HV EF / DR41B



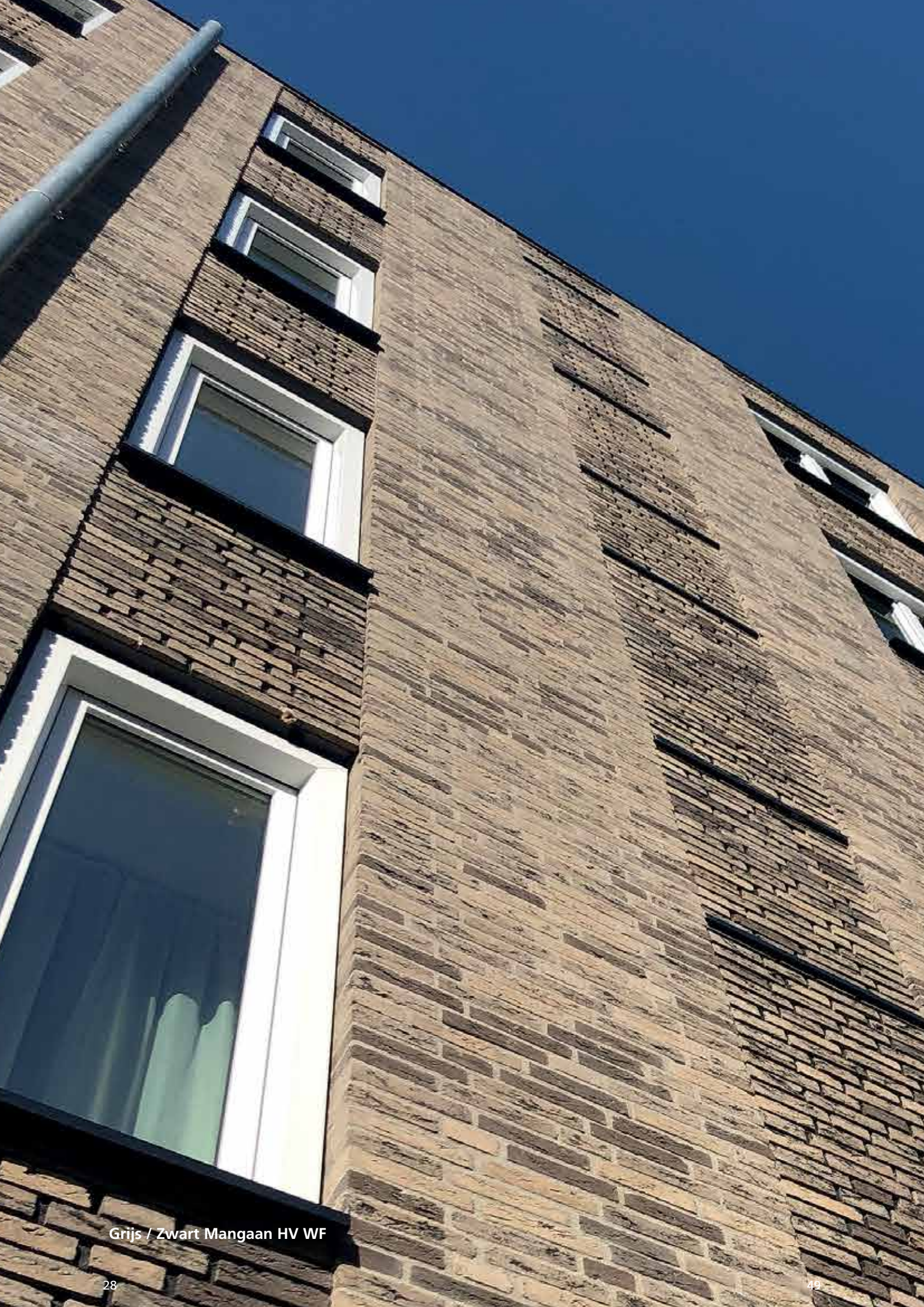
Holmbury HV EF / DR21B



Naturel HV EF / DR11B



Old West Mill HV EF / DR19B



Grijs / Zwart Mangan HV WF

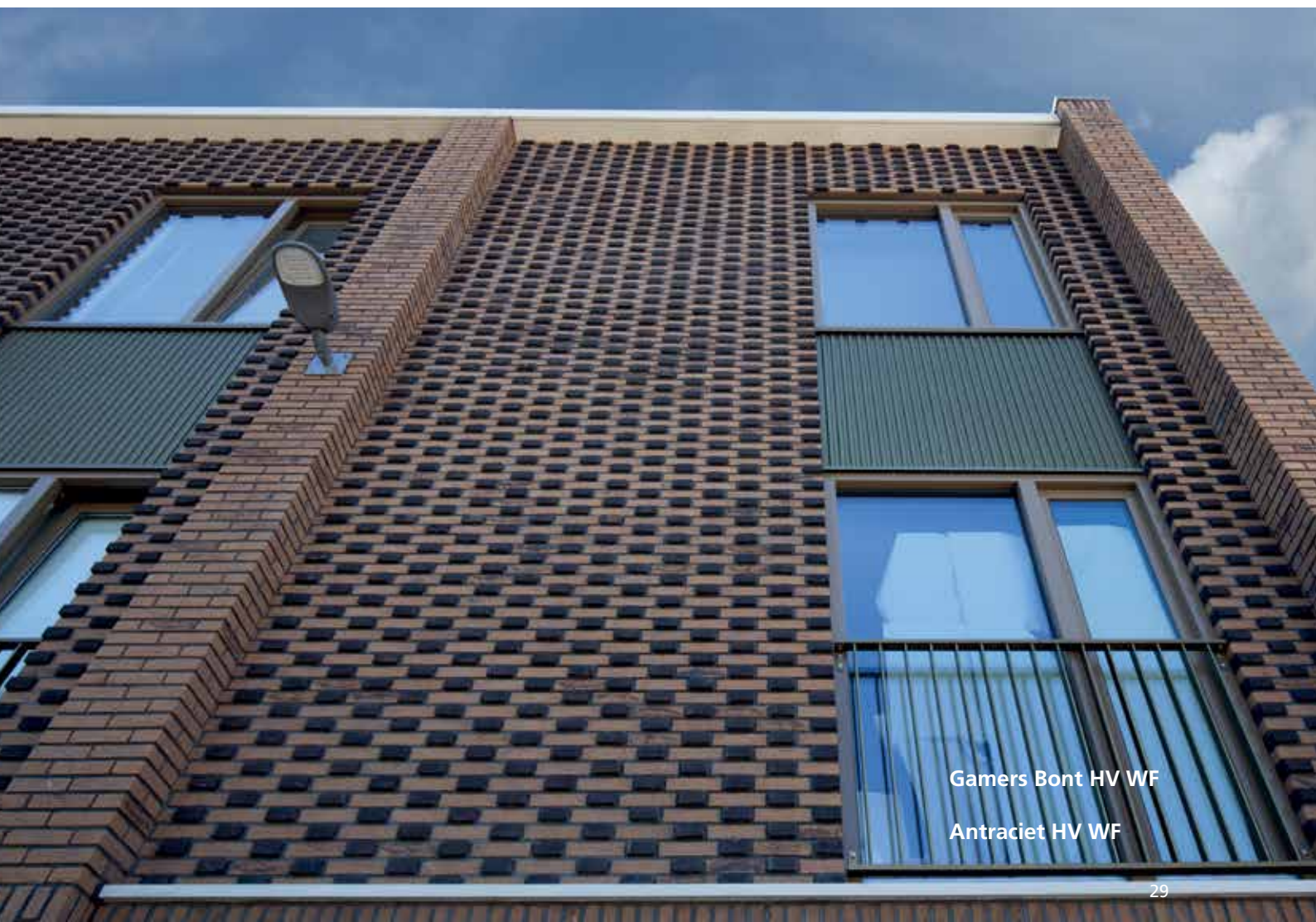
RIJSWAARD HAND MOULDED



Rood z.z. HV EF / DR43B



Whitley HV EF / DR15B



Gamers Bont HV WF

Antraciet HV WF

STERREWAARD COLLECTION

We built our second brick press to develop and produce the Sterrewaard collection. These bricks are made from high-quality clay covered by a layer of sand in an attractive, intense colour. This combination gives Sterrewaard bricks a rugged grain texture and distinct colour. Synonymous with pure elegance, Sterrewaard has been the showpiece of our range from the very start. Unsurprisingly, it has been received with open arms by designers and architects.

Sterrewaard bricks are also available in brick slips and corners.



STERREWAARD

C O L L E C T I O N

- Auriga HV WF
- Carina HV WF (on demand)
- Centaurus HV WF
- Grus HV WF
- Hydra HV WF
- Indus HV WF
- Lepus HV WF
- Libra HV WF
- Mensa HV WF (on demand)
- Norma HV WF
- Sagitta HV WF
- Sculptor HV WF
- Virgo HV WF
- Auriga HV EF / DR203B
- Draco HV EF / DR201B (on demand)
- Gemini HV EF / DR107B
- Indus HV EF / DR131B
- Lepus HV EF / DR129B
- Sagitta HV EF / DR105B

STERREWAARD COLLECTION



Auriga HV WF



Carina HV WF (on demand)



Centaurus HV WF



Grus HV WF



Hydra HV WF



Indus HV WF



Lepus HV WF

STERREWAARD COLLECTION



Libra HV WF



Mensa HV WF (on demand)



Norma HV WF



Sagitta HV WF



Sculptor HV WF



Virgo HV WF

STERREWAARD COLLECTION



Auriga HV EF / DR203B



Draco HV EF / DR201B (on demand)



Gemini HV EF / DR107B



Indus HV EF / DR131B



Lepus HV EF / DR129B



Sagitta HV EF / DR105B



Sagitta HV WF



Lepus HV WF



AQUA COLLECTION

Normally, bricks are covered with an extra coating, usually of sand, to enable easy removal from the mould after firing, But Aqua bricks – also known as Wasserstrich bricks – are not coated with sand, but sprayed with water. This gives the bricks an organic finish that highlights the pure, natural colour of the clay. Add to this the natural colour of the clay mix and the result is a brick rich with creative possibilities, especially in modern architecture.

Aqua bricks are also available in brick slips and corners.



AQUA / KAMELEON

C O L L E C T I O N

- Aqua beige redux WF
- Aqua geel WF
- Aqua grijs WF
- Aqua maasbruin redux WF
- **Aqua roodpaars WF on demand**
- Aqua roodpaars redux WF
- Aqua Geel EF / DR24B
- Aqua Roodpaars redux EF /DR14B

Collection Kameleon

- Aqua bruin geel WF
- Aqua geel wit WF
- Aqua geel bruin WF
- Aqua grijs wit WF
- Aqua grijs zwart WF
- Aqua oranje blauw WF

AQUA COLLECTION



Aqua Beige Redux WF



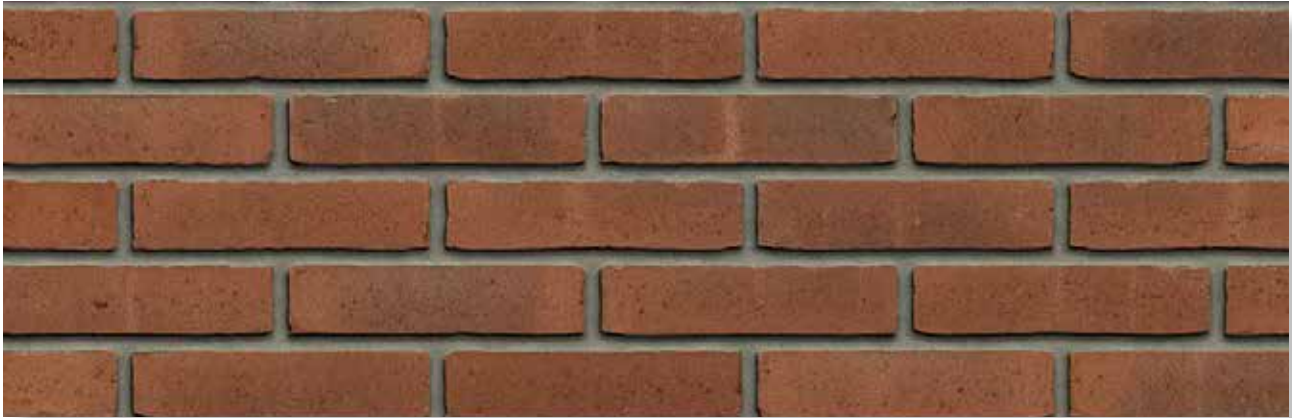
Aqua Geel WF



Aqua Grijs WF



Aqua Maasbruin Redux WF



Aqua Roodpaars WF (on demand)



Aqua Roodpaars Redux WF



Aqua Geel EF / DR24B



Aqua Roodpaars Redux EF / DR14B

AQUA KAMELEON COLLECTION



Aqua Oranje Blauw WF



Aqua Geel Bruin WF



Aqua Bruin Geel WF



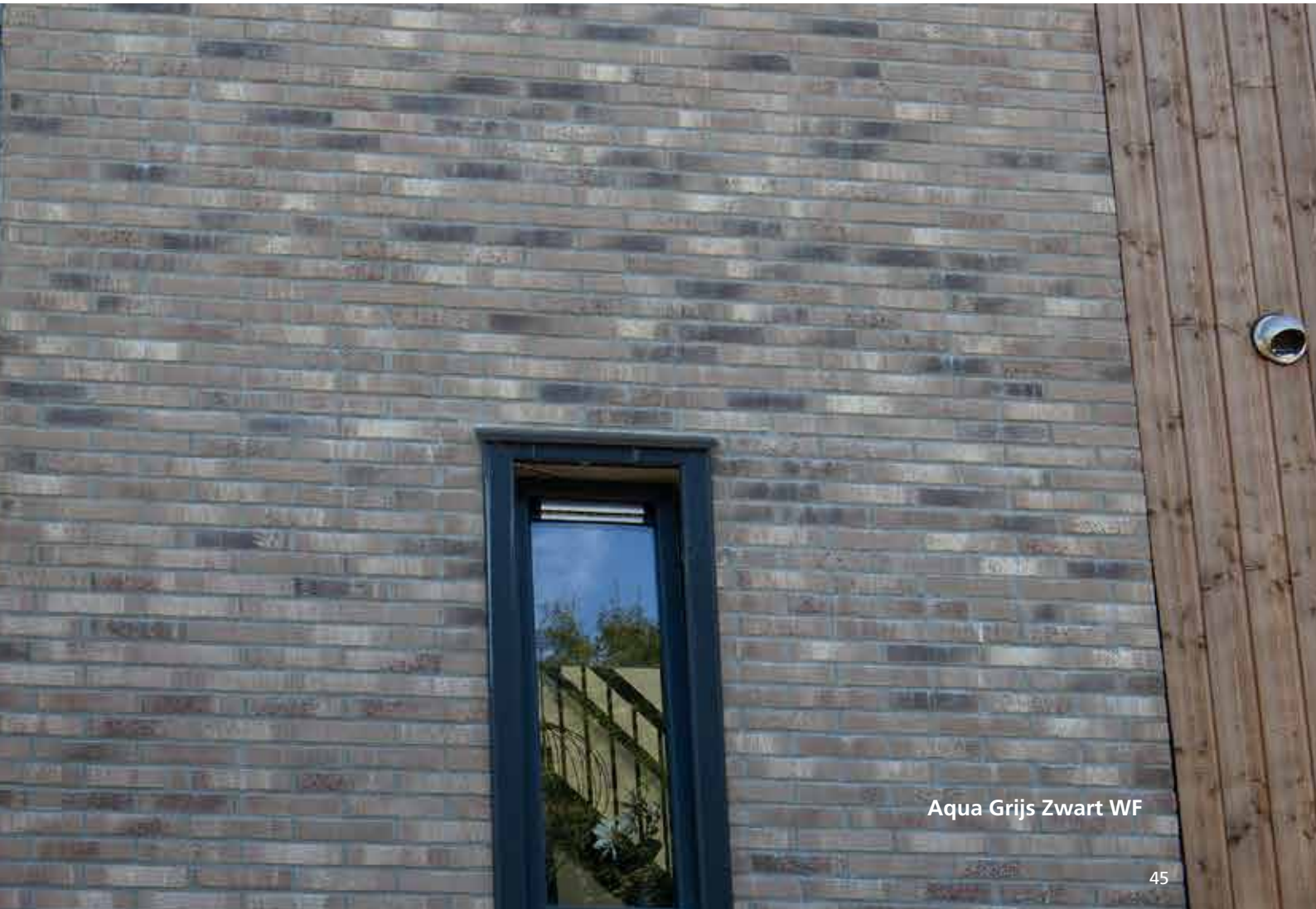
Aqua Grijs Wit WF



Aqua Grijs Zwart WF



Aqua Geel Wit WF



Aqua Grijs Zwart WF



Aqua Beige Redux WF



RETRO COLLECTION

Our retro bricks take you effortlessly back in time. These bricks feature the charm and ambiance of yesteryear, but with the quality of today's standards.

To achieve this excellent combination of qualities, we first fire bricks of the same high quality as all our products. The bricks are then subjected to an artificial aging process. This involves tumbling them in a barrel – similar to a centrifuge – for hours until they are literally stripped of their sharp edges. Afterwards, the bricks look as if they have been in use for many years. A thin cement coating completes the charming retro look.

Retro bricks are also available in brick slips and corners.



RETRO

C O L L E C T I O N

- Boise HV WF
- Boulder HV WF
- Cheyenne HV WF
- Jackson HV WF
- Chimay VB EF
- Dakota VB EF
- Texas VB EF
- Utah VB EF
- Wisconsin VB EF

RETRO COLLECTION



Boise HV WF



Boulder HV WF



Cheyenne HV WF



Jackson HV WF



Chimay VB EF



Dakota VB EF

RETRO COLLECTION



Texas VB EF



Utah VB EF



Wisconsin VB EF



Carbon-sintered facing bricks

A building with a **unique appearance** depends entirely on **the bricks** used. Sintered bricks have a timeless quality and bring a **characteristic look and feel** to every projects.

Before **the bricks** are loaded into the kiln, they are **sprinkled with carbon powder**.

Being fired at a high temperature causes them to start to melt, giving the **bricks different colour** in some spots and creating a unique aesthetic.



FLAME

C O L L E C T I O N

- Caramel Brown Flame WS WF
- Crimson Red Flame HV WF
- Dark Amber Red Flame HV WF
- Fawn Yellow Flame HV WF
- Macaroon Yellow Flame HV WF
- Pewter Grey Flame HV WF
- Sable Black VB WF
- Salmon Red Flame VB WF
- Smoke Grey Flame WS WF

FLAME COLLECTION



Caramel Brown Flame WS WF



Crimson Red Flame HV WF



Dark Amber Red Flame HV WF



Fawn Yellow Flame HV WF

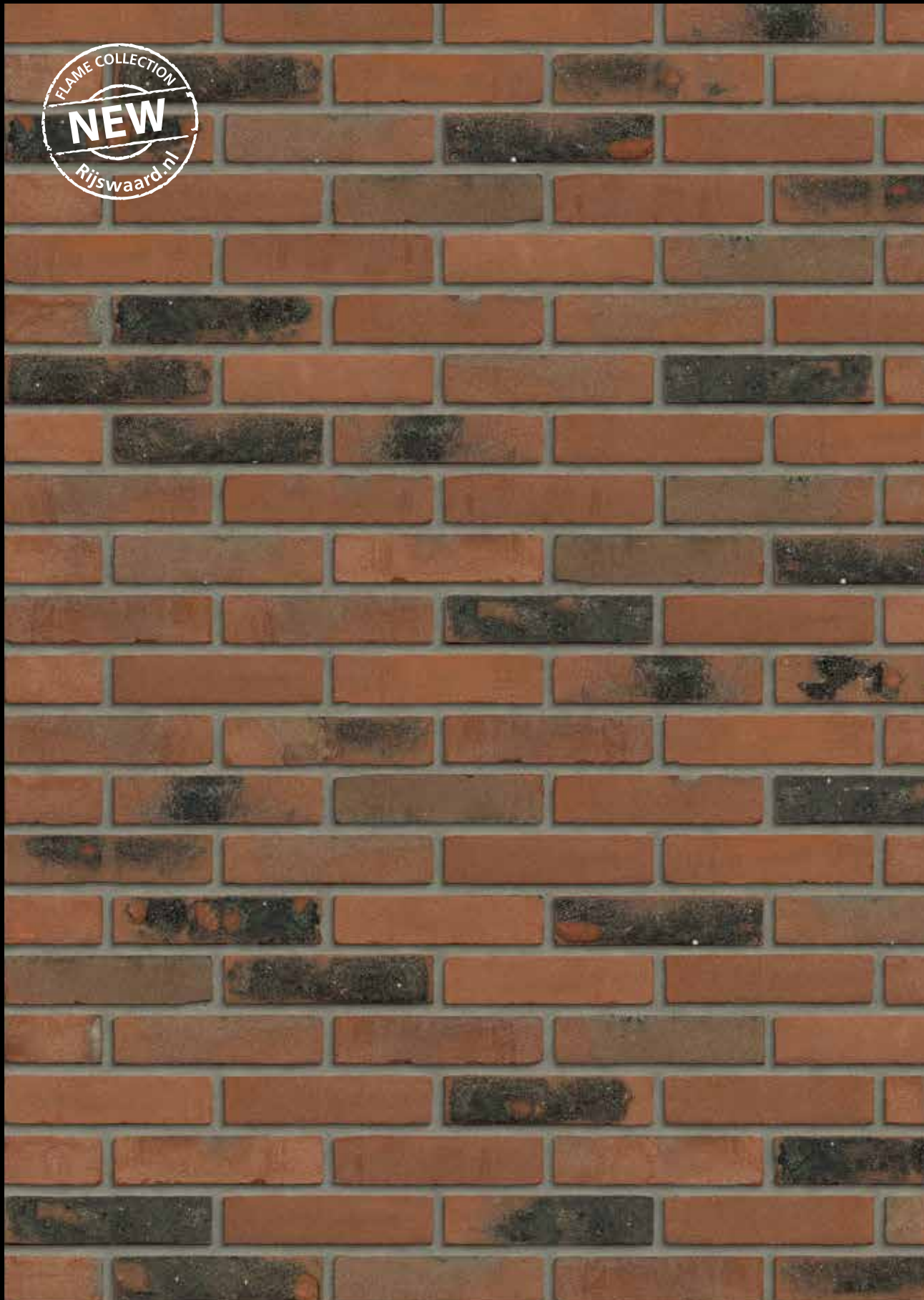
FLAME COLLECTION



Macaroon Yellow Flame HV WF

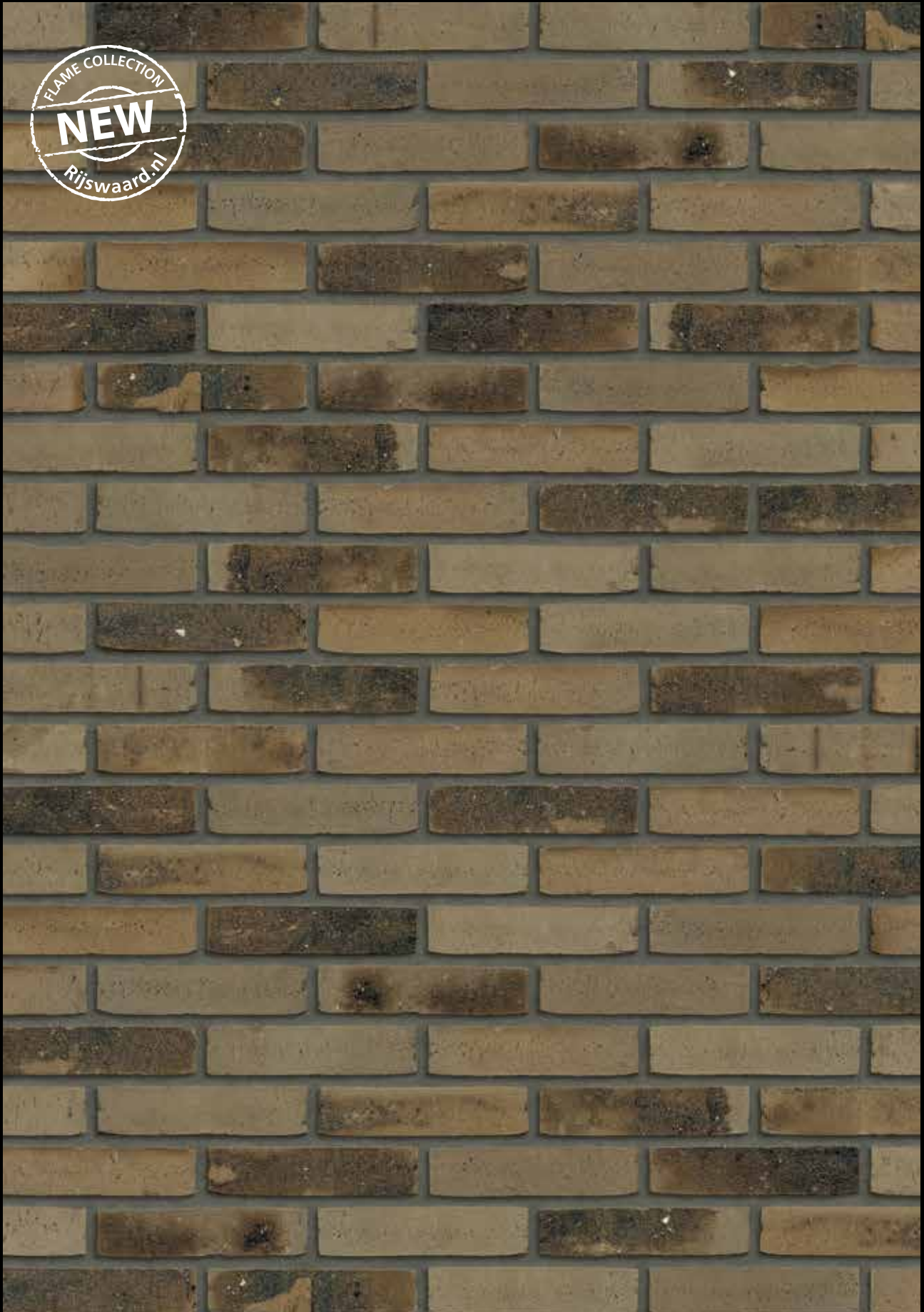


Pewter Grey Flame HV WF

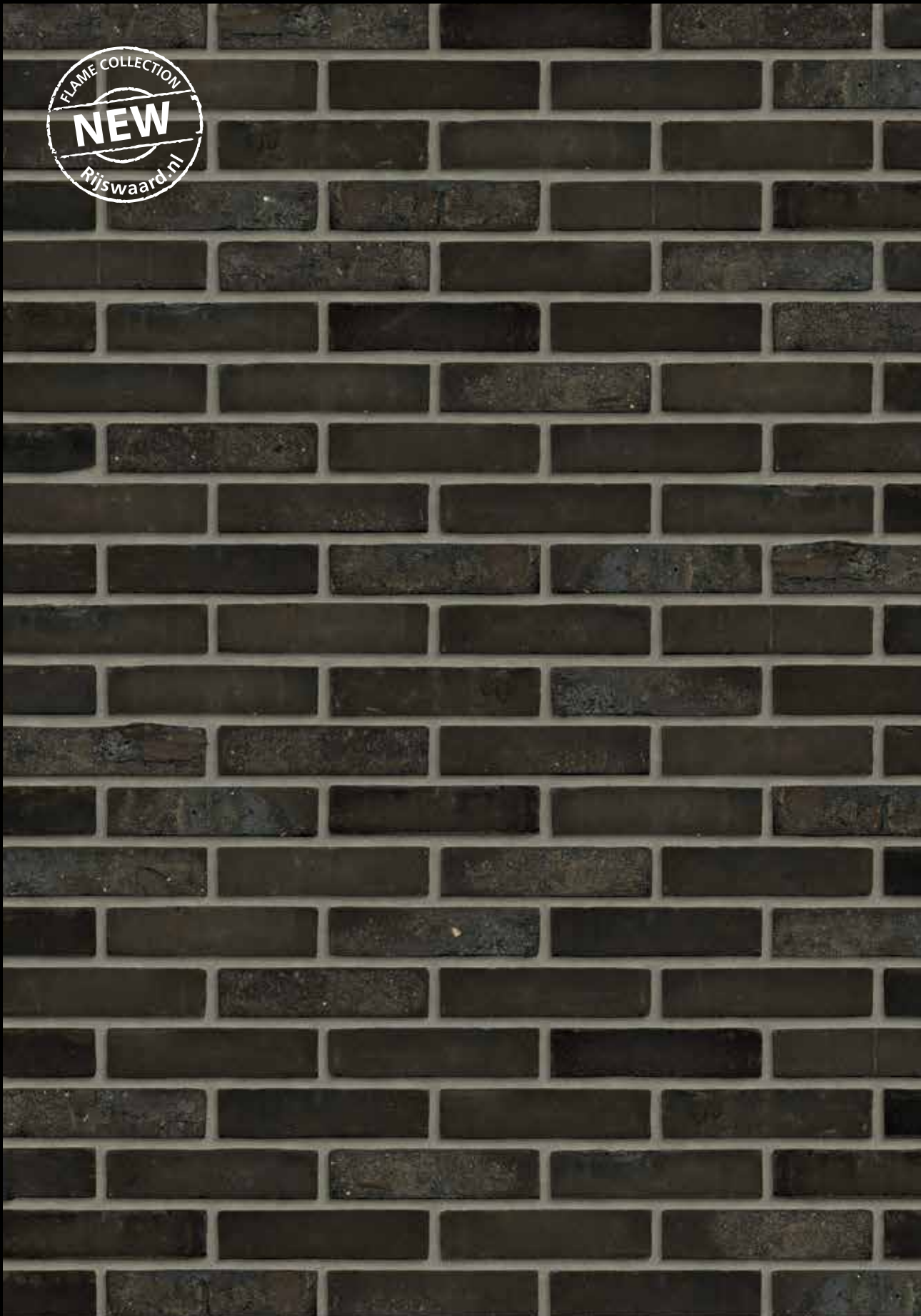


Salmon Red Flame VB WF

FLAME COLLECTION



Smoke Grey Flame WS WF



Sable Black VB WF

BRICK SLIPS


A FLEXIBLE SOLUTION FOR ALL NEW-BUILD OR RENOVATION PROJECTS

Today's brick slips are perfect for eco-friendly buildings, which is also 100% perfect for Rijswaard. In addition to the environmental benefits, these ultra-thin bricks offer other unique advantages. They are lightweight, exceptional quality, fully fledged bricks that retain their shape, also being maintenance-friendly and very easy to use.



BRICK SLIPS





INDISTINGUISHABLE FROM
REGULAR FACING BRICKS



Brick slips Antraciet HV WF



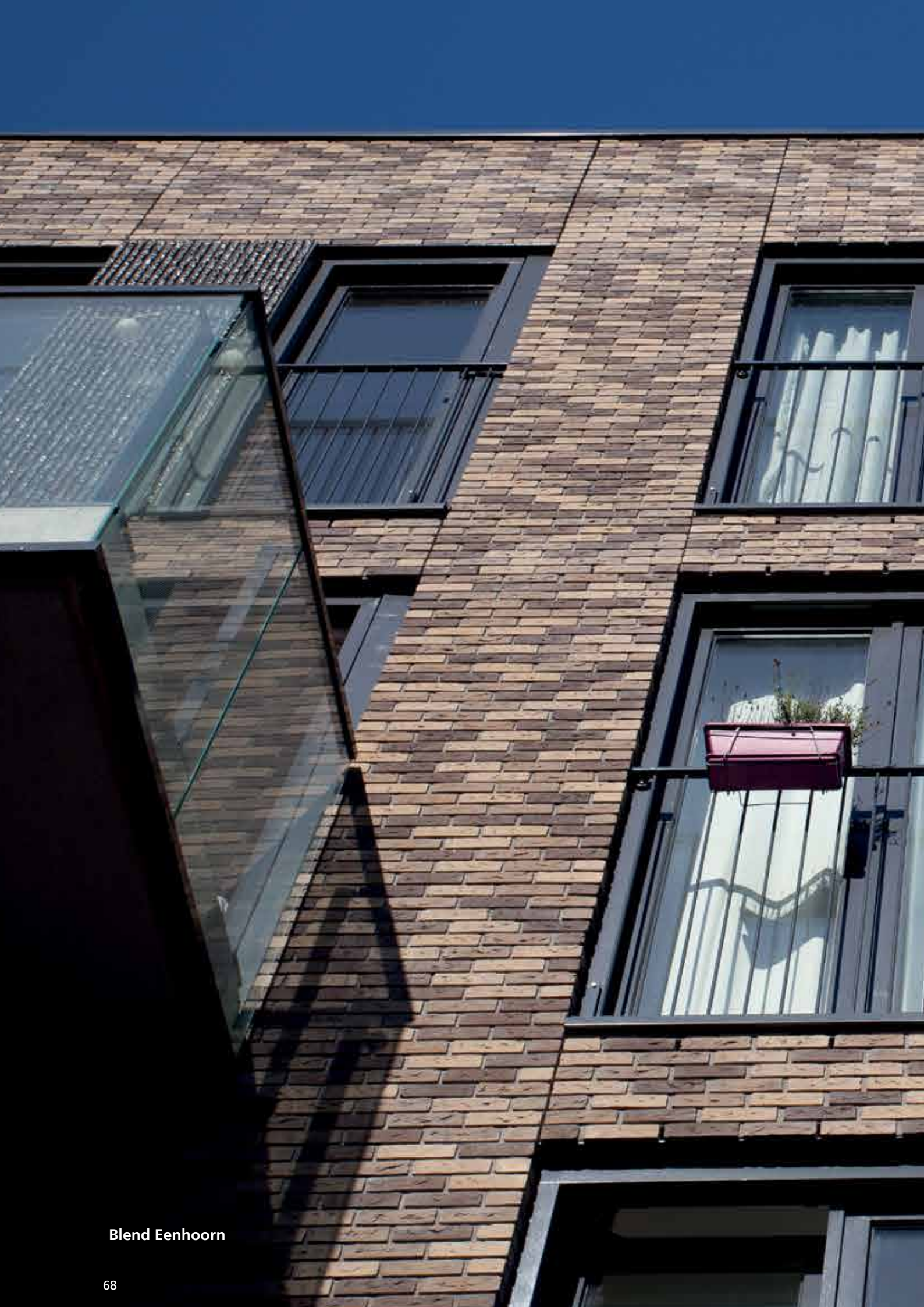
A combination of **bricks**
from different
collections gives any
project a unique look
and feel



BLENDS



Blends on demand





STAY ON THE SAFE SIDE TEXTURE DESIGNER

PUT OUR BRICKS TO WORK FOR
YOU USING THE
TEXTURE DESIGNER. GO TO
[https://rijswaard.
texturedesigner.nl/#/](https://rijswaard.texturedesigner.nl/#/)



**Genuine coloured textures
of premium quality**

**Many different bricks,
masonry bonds and
joint colours**



30,000 m²
overhang with
10.000 solar
panels



ENVIRONMENTAL

STEWARDSHIP

An enduring ambition

Here at Rijswaard, progress is one of the most important cornerstones of our business. While the focus during our first decade was primarily on improving our products, production processes and working conditions, our main focus today is the environment. It's why we boldly pursue every opportunity to reduce our environmental impact and footprint.

This innovative mindset has created spectacular change in recent years. There is not enough space here to explain how environmentally friendly our production processes are, but one of the latest updates is worth highlighting. The stockyard where our inventory is stored is covered. This means that less plastic is needed to protect the bricks from the elements. But this is not the most impressive attribute.

2% annual energy reduction

Nearly half of the overhang – around 15,000 m² – is fitted with 10,000 solar panels which, together with 37 convertors, can produce 3.2 MWh. That is more than a quarter of the energy needed to keep the factory running. This enabled us to achieve our goal of 30% energy savings from 2005 to 2020, making Rijswaard currently among the most sustainable brickworks in the Netherlands.



sterrewaard
showroom

STERREWAARD®
BAKSTEEN

rijswaard
showroom



RIJSWAARD®
BAKSTEEN





Perfection brick by brick!

Rijswaard Baksteen

De Rijswaard 2 5308 LV Aalst (Gld.) T +31 (0) 418 - 552221

E info@rijswaard.nl | www.rijswaard.com

